

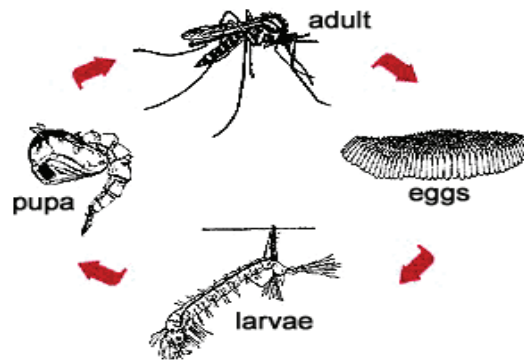
Mosquito Life History

EGGS

- Female mosquitoes lay eggs.
- Need a blood meal to develop eggs.
- Some lay egg rafts on permanent standing water.
- Each egg raft contains 100 to 300 eggs.
- Others lay single eggs on soil that will be flooded.
- The average female mosquito will lay between 2000-3000 eggs in her lifetime.
- Some eggs lay dormant for several years.

LARVA

- Eggs hatch within 24-48 hours of exposure to water.
- Can develop in a few table-spoons of water.
- Filter feed organic particles from the water.
- Breathe air by floating/hanging by siphon at surface of water.
- Grow and molt their outer skin four times.
- Wiggle to bottom if startled.
- Stage can last a few days to months depending on water temperature.



PUPA

- After the larval stage, the mosquito turns into a pupa.
- This stage usually lasts 1 to 2 days.
- A pupa looks like a little black comma.
- Somersault down in the water to get away from predators.
- Pupa do not eat.
- Breathe air using trumpets.
- They continue to develop their adult features.
- The pupal skin splits and adult emerges.

ADULT

- The adults are the mosquitoes we typically think of.
- Female mosquitoes bite.
- Male mosquitoes drink nectar from flowers.
- The proboscis is a needle-like mouthpart used to suck blood.
- The average life span of a female is 3 to 100 days.
- Attracted to dark clothes, carbon dioxide, and heat.
- Most mosquitoes stay within 1 to 2 miles of their breeding site.